



SMALL
INFORMATION
NETWORKS



LOCAL AREA
NETWORKS
(LAN)



WORK
STATIONS



SERVERS



POINT OF SALES
SYSTEMS (PoS)

Dialog Vision

500-3000 VA Single-phase



Highlights

- Superior protection
- High availability
- Versatility
- LCD display
- Advanced communication
- Automatic Voltage Regulator (AVR)



The DIALOG VISION series includes the DVR (Rack version) and DVD (Dual Rack/ Tower version) with models from 500VA to 3000VA and uses sinewave digital technology.

The DIALOG VISION range, with its advanced communications and connectivity options, is the ideal solution for installations requiring superior protection and versatility.

DIALOG VISION is the best protection for network devices, rackmounted servers, conventional rack-mounted or tower servers, network storage systems.

Superior protection

An Automatic Voltage Regulator (AVR) provides stabilisation from brownouts,

sag and surge voltages. EMI filters then provide further protection from spikes and transients. When the mains power supply fails, the load is powered by the inverter and receives a true sinewave supply for maximum power continuity and reliability.

The UPS also incorporates protection for PC and network, telephone line/modem connections (RJ45-RJ11).

High availability

One Power Share socket for load-shedding of the least critical loads to maximise back up time for the most critical servers.

Hot swappable battery (front access) for simple and risk-free UPS maintenance.

Additional Battery Boxes (with chargers) are available for the DVD 2200 and 3000 for long back up time applications. Battery Test facility to detect deteriorating battery performance and failure. Deep discharge protection: to prevent the battery set being damaged by a low load, long duration discharge, using an increased end-of-discharge battery voltage threshold.

Versatility

DIALOG VISION Dual (DVD 1500, 2200 and 3000) can be placed directly onto the floor or mounted in 19" rackmount cabinets. The front panel digital display can be easily pulled out and rotated to suit the installation format. DIALOG VISION includes an Emergency Power Off (EPO) input contact. Cold Start function to allow a DIALOG VISION to power up with no mains power supply present.

Advanced communication

- Advanced communication and multiplatform, for all operating systems and network environments: Powershield³ supervision and shut-down software included, with SNMP agent, for Windows 7, 2008, Vista,

- 2003, XP, Linux, Mac OS X, Sun Solaris, Linux, VMWare ESX operating systems and other Unix operating systems
- USB or RS232 serial port (selectable)
- Slot-in SNMP network adapter card
- LCD display.

Features

- ECO LINE product
- Power Share socket
- Surge-protected sockets for powering strong impulsive absorption loads (laser printers, etc)
- Ability to switch on the UPS in the absence of mains power (Cold Start)
- User-replaceable batteries (Battery Swap)
- USB Interface AND RS232

- Slot for communication boards
- Maximum reliability, monitoring and auto-shutdown using PowerShield³ software, available free of charge from **www.riello-ups.com**
- Highly reliable batteries (automatic and manually activated battery test)
- Built-in short circuit protection
- Auto restart (when mains power is restored, after discharge of the batteries)
- EPO

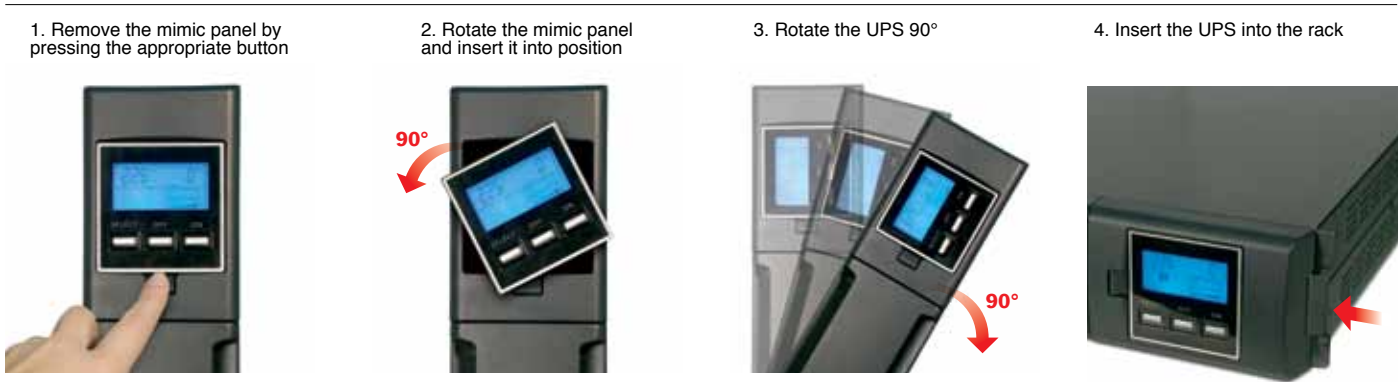
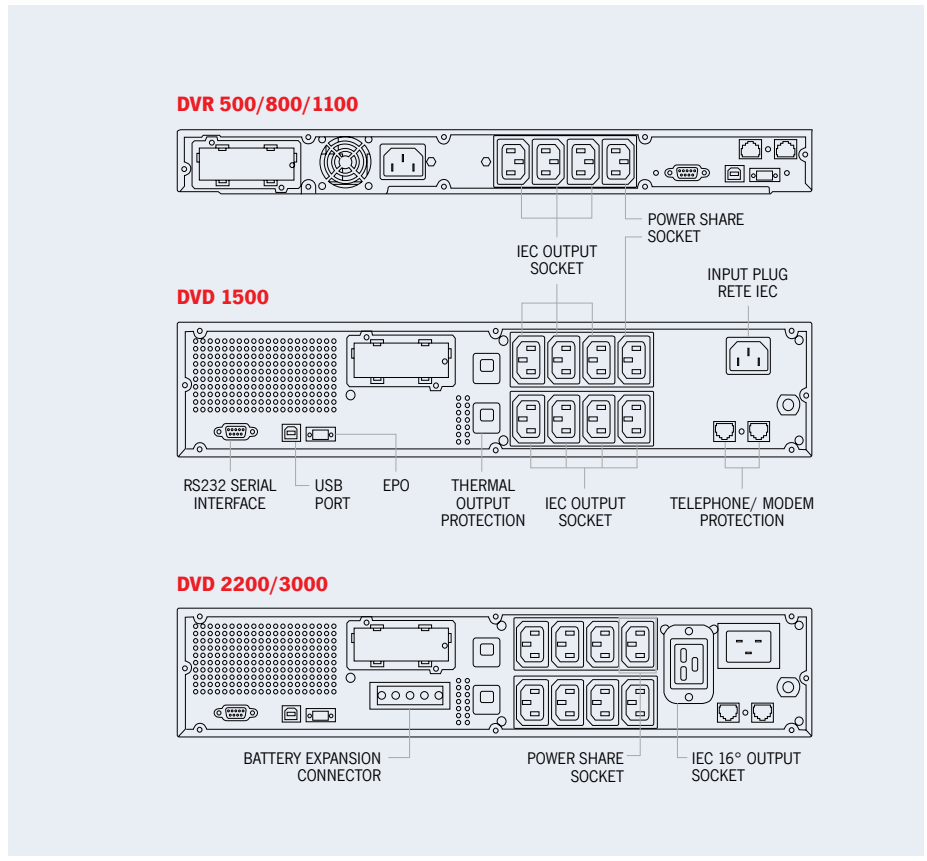
2-YEAR WARRANTY

Details

Battery box

MODELS	BB DVD 96-A5
DVD MODELS	DVD 2200 - DVD 3000

Dimensions (mm)



MODELS	DVR 500	DVR 800	DVR 1100	DVD 1500	DVD 2200	DVD 3000
POWER	500VA/350W	800VA/540W	1100VA/740W	1500VA/1050W	2200VA/1540W	3000VA/2100W
INPUT						
Nominal voltage	230 Vac (200, 208, 220, 240 V selectable)					
Voltage tolerance	160 - 294 Vac					
Frequency	50 or 60 Hz with automatic selection					
Frequency tolerance	±5%					
OUTPUT						
Nominal voltage	230 Vac (200, 208, 220, 240 V selectable)					
Frequency	50 or 60 Hz with automatic selection					
Waveform	Sinusoidal					
BATTERIES						
Type	VRLA AGM lead acid maintenance free batteries					
Charging time	4-6 h					
OTHER FEATURES						
Net weight (kg)	12	13.5	15.6	28.7	31	32.8
Gross weight (kg)	16	18	20	32.5	36	38
Dimensions (hwd) (mm)	1U x 19" x 460			T 88 x 438 x 582 - R 2U x 19" x 582		
Packaging dimensions (hwd) (mm)	200 x 605 x 623			260 x 726 x 623		
Protection devices	Overcurrent - short-circuit - overvoltage - undervoltage - temperature - excessive low battery					
Communication	USB / RS232 / slot for communications interface					
Input sockets	1 IEC 320 C14			1 IEC 320 C20		
Output socket	4 IEC 320 C13		8 IEC 320 C13		8 IEC 320 C13 - 1 IEC 320 C19	
Regulations	EN 62040-1-1 and Directive 2006/95/EC EN 62040-2 and Directive 2004/108 EC					
Ambient temperature	0°C / +40°C					
Storage temperature	-15°C / 45°C					
Colour	Dark grey RAL 7016					
Relative humidity	<95% non-condensing					
Noise level	< 50 dBA					

